



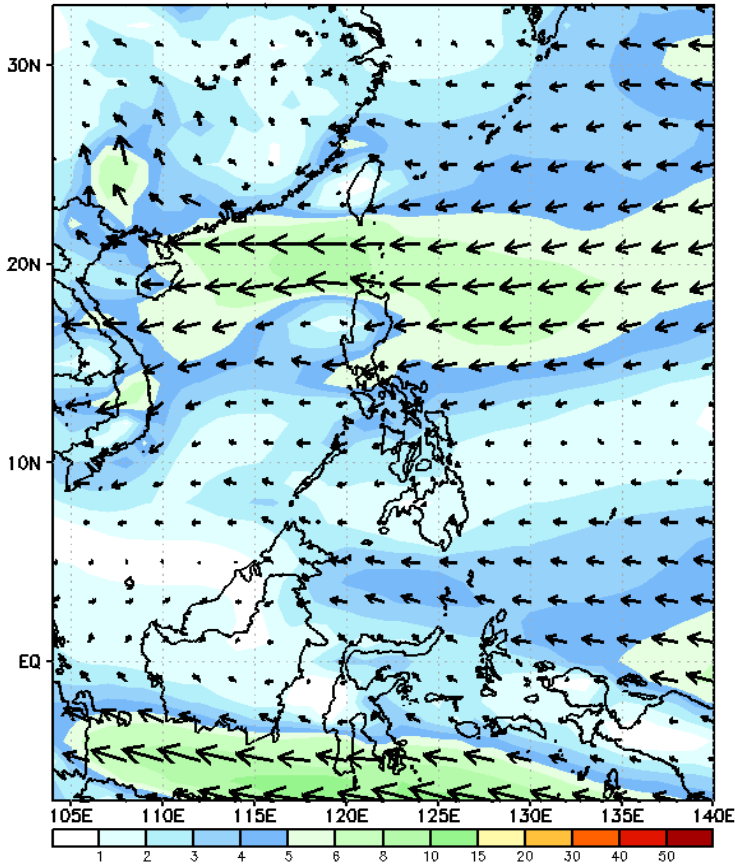
Week 1 & Week 2 Forecast for the Philippines using GEFS Model



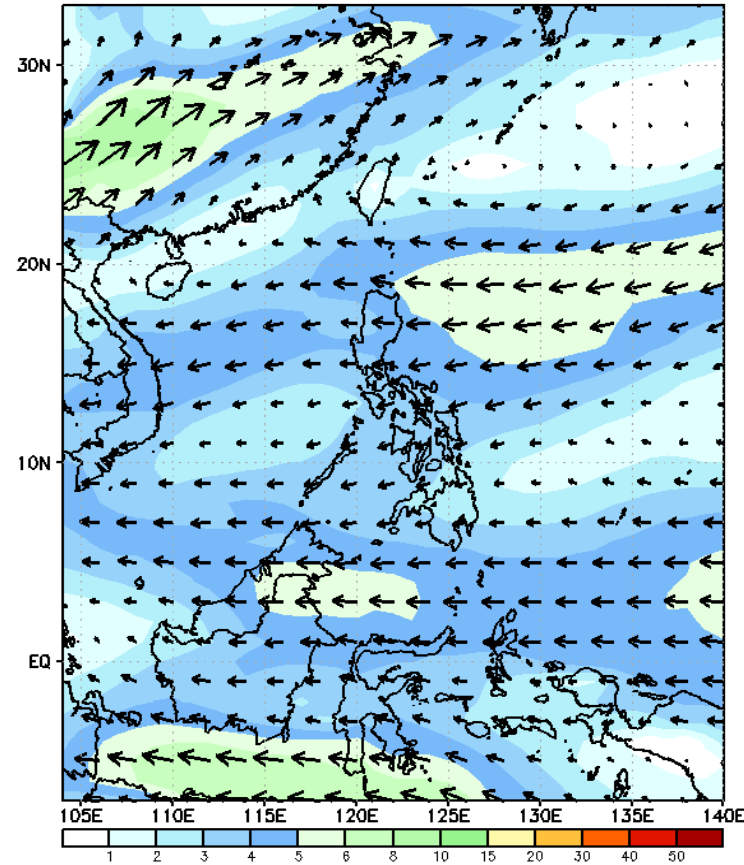
GEFS Week-1 Wind Forecasts:

Week 1: Oct 11-17, 2024

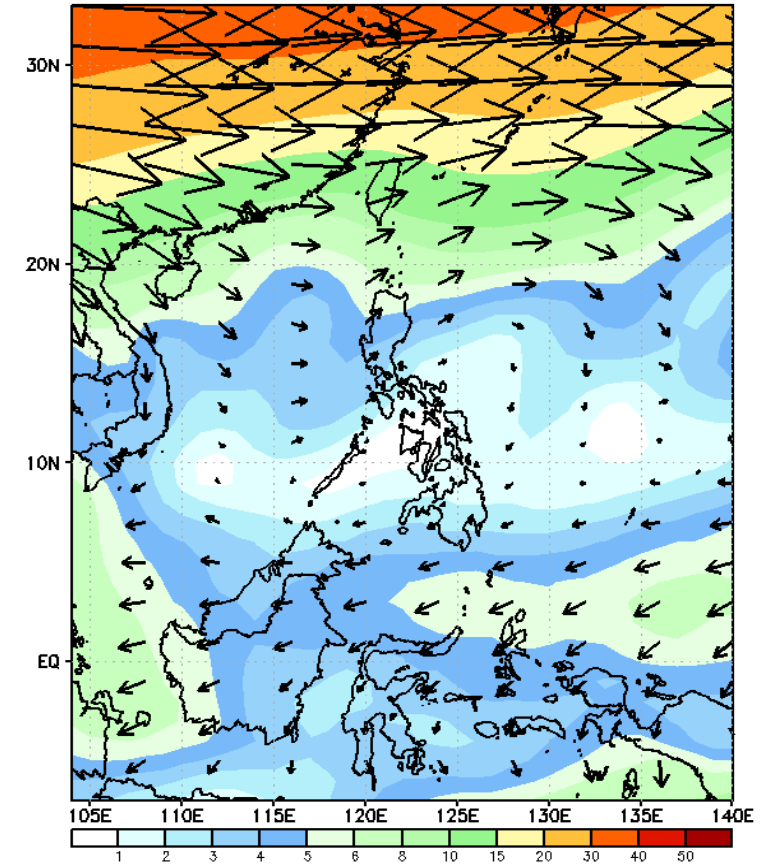
GEFS Week-1 850-hPa Wind Total
Valid: 20241011 - 20241017



GEFS Week-1 700-hPa Wind Total
Valid: 20241011 - 20241017

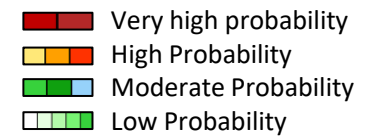


GEFS Week-1 200-hPa Wind Total
Valid: 20241011 - 20241017



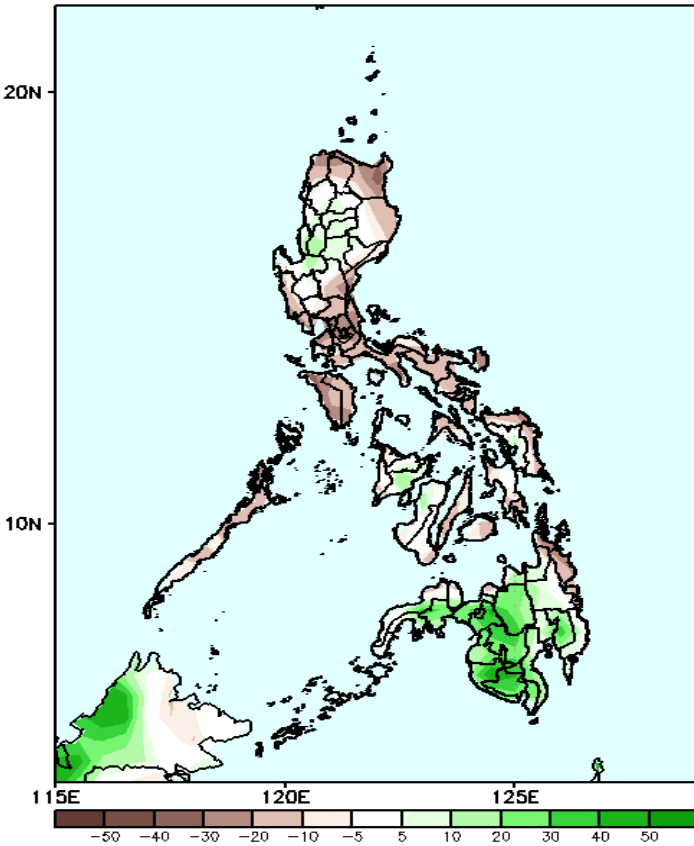
Easterlies affecting most parts of the country.

Precipitation Anomaly and Exceedance Probability > 25/50 mm



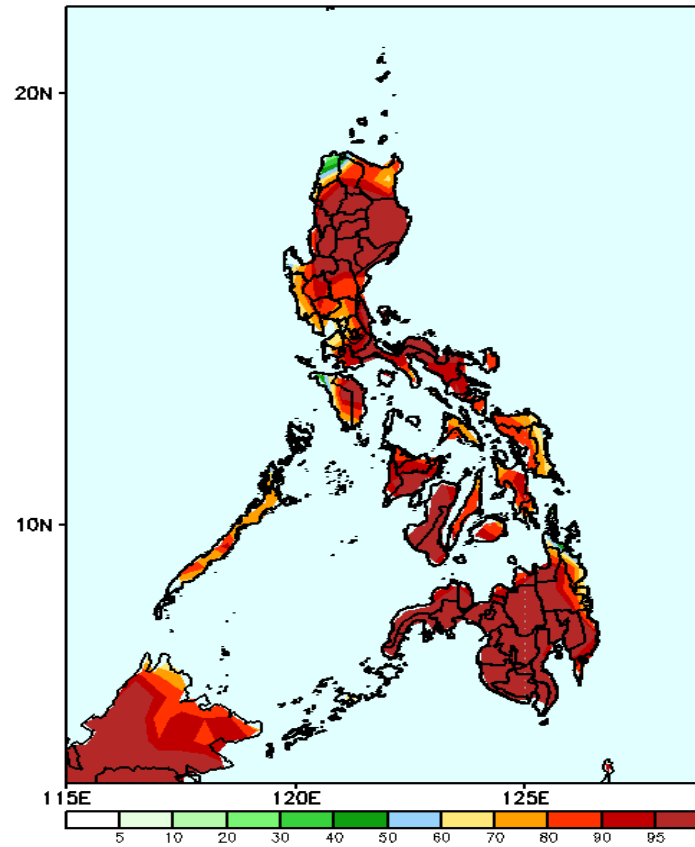
Week 1: Oct 11-17, 2024

GEFS Week-1 Precip Anomaly
Valid: 20241011 - 20241017



Rainfall deficit of 10-60mm is likely in most parts of Luzon, Visayas, and Surigao del Sur while an increase of 20-50mm rainfall is expected for the rest of Mindanao.

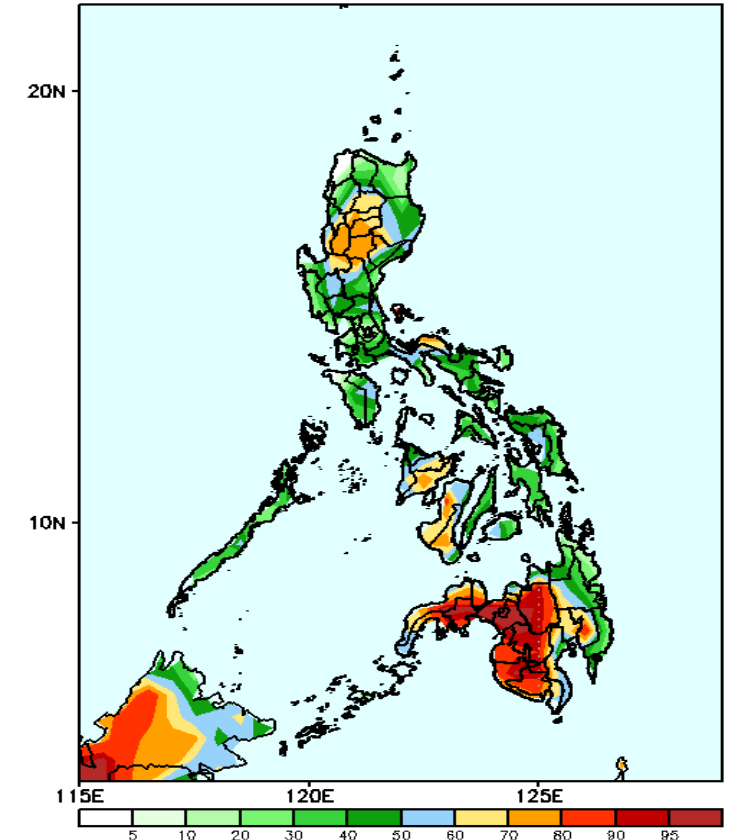
GEFS Week-1 Exceedance Prob. > 25mm
Valid: 20241011 - 20241017



Probability to Exceed 25mm

- High to very high over most parts of the country;
- Moderate over Ilocos Norte.

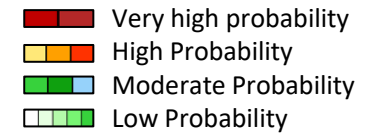
GEFS Week-1 Exceedance Prob. > 50mm
Valid: 20241011 - 20241017



Probability to Exceed 50mm

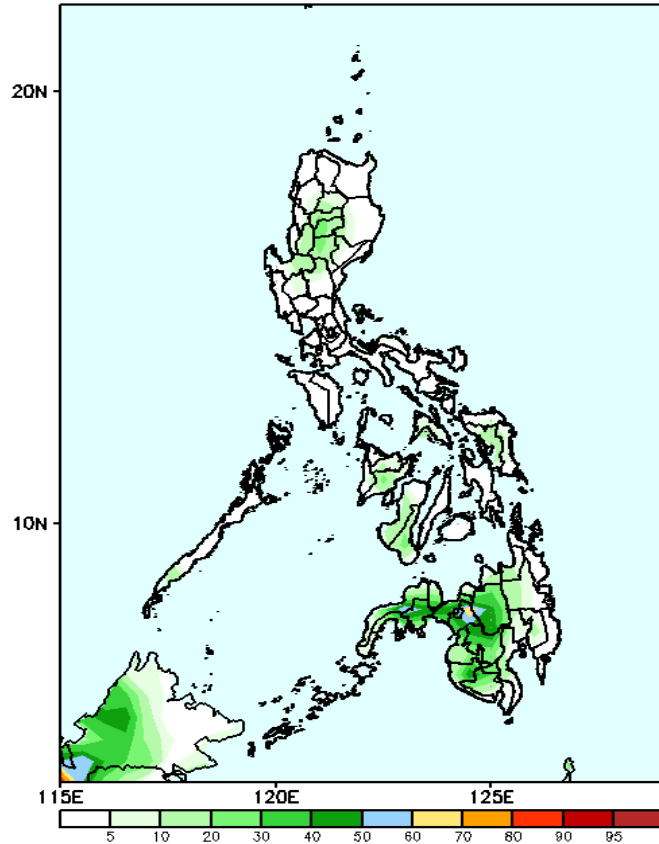
- High to very high over Western and Central Mindanao;
- Moderate to high over the southern part of Northern Luzon, Camarines Norte, Western Visayas, NIR, and the rest of Mindanao;
- Low to moderate over the rest of Luzon and Visayas.

Exceedance Probability > 100/150/200 mm



Week 1: Oct 11-17, 2024

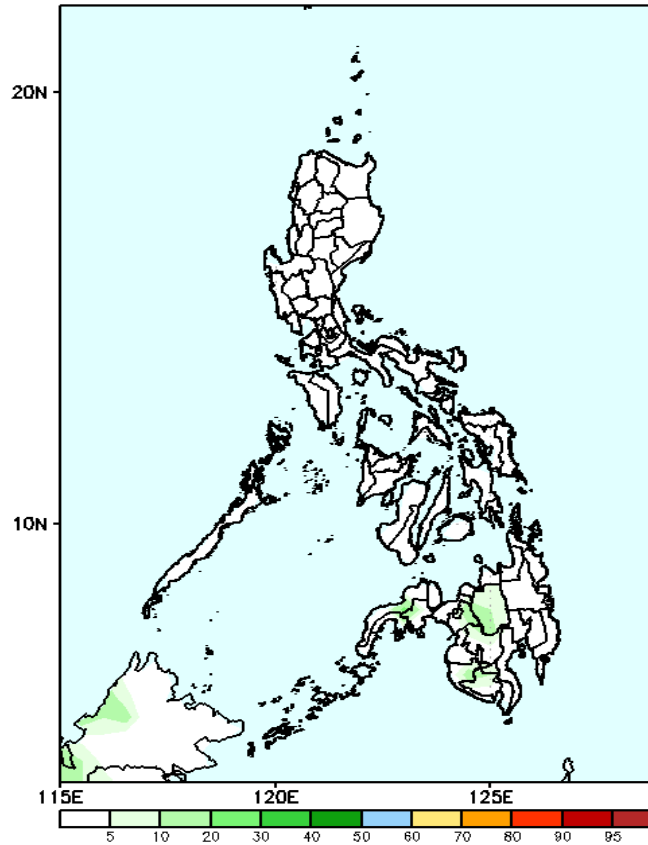
GEFS Week-1 Exceedance Prob. > 100mm
Valid: 20241011 - 20241017



Probability to Exceed 100mm

- Moderate to a high over Bukidnon and Lanao Provinces;
- Low over the rest of the country.

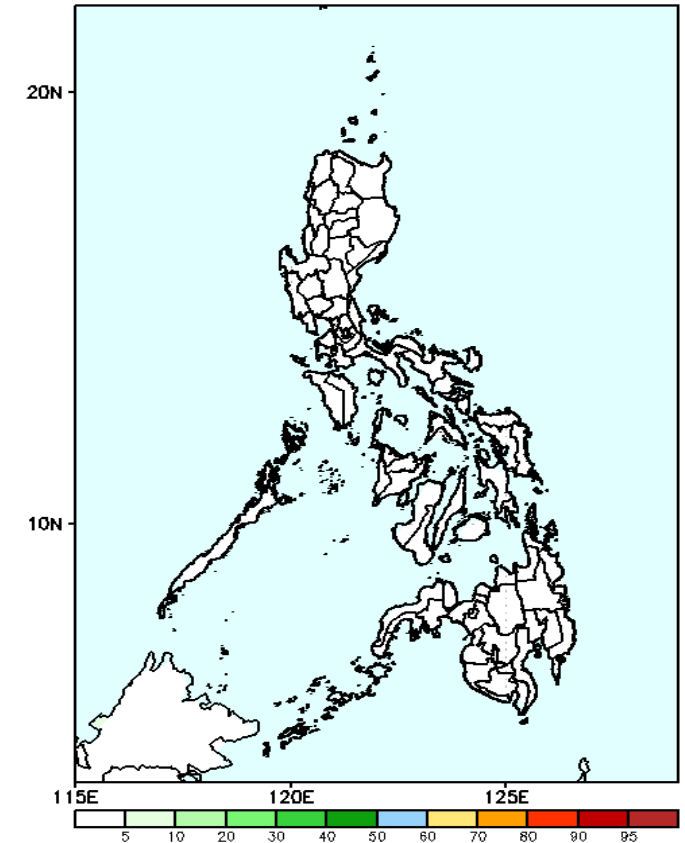
GEFS Week-1 Exceedance Prob. > 150mm
Valid: 20241011 - 20241017



Probability to Exceed 150mm

- Low across the country.

GEFS Week-1 Exceedance Prob. > 200mm
Valid: 20241011 - 20241017



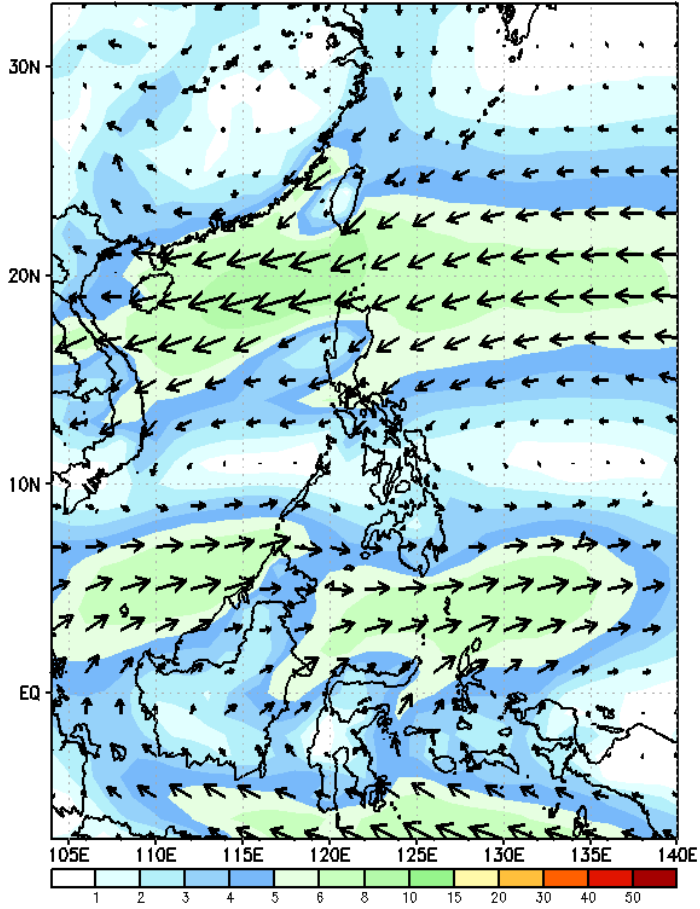
Probability to Exceed 200mm

- Low across the country.

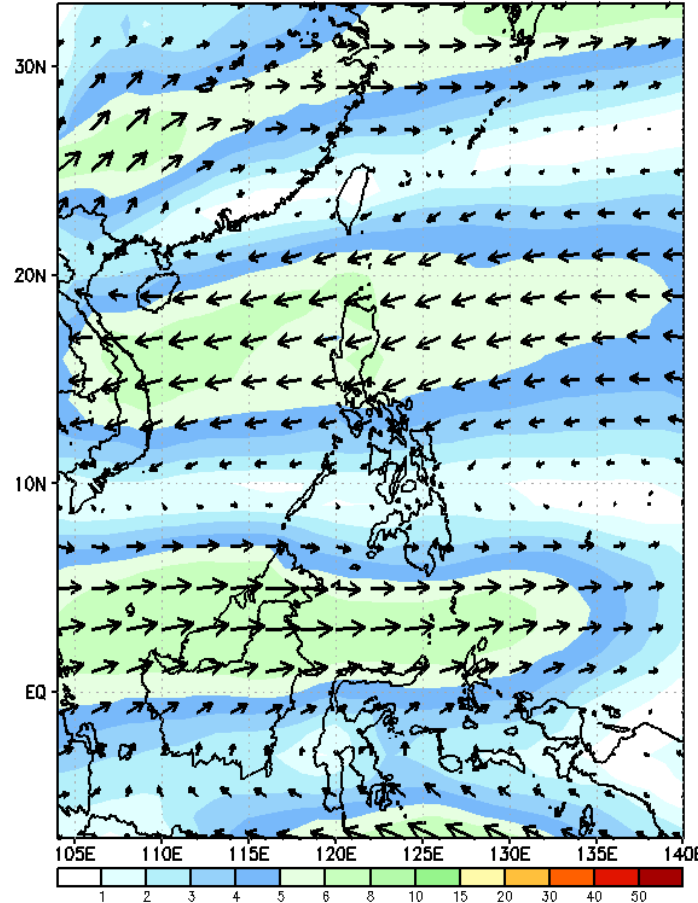
GEFS Week-2 Wind Forecasts:

Week 2: Oct 18-24, 2024

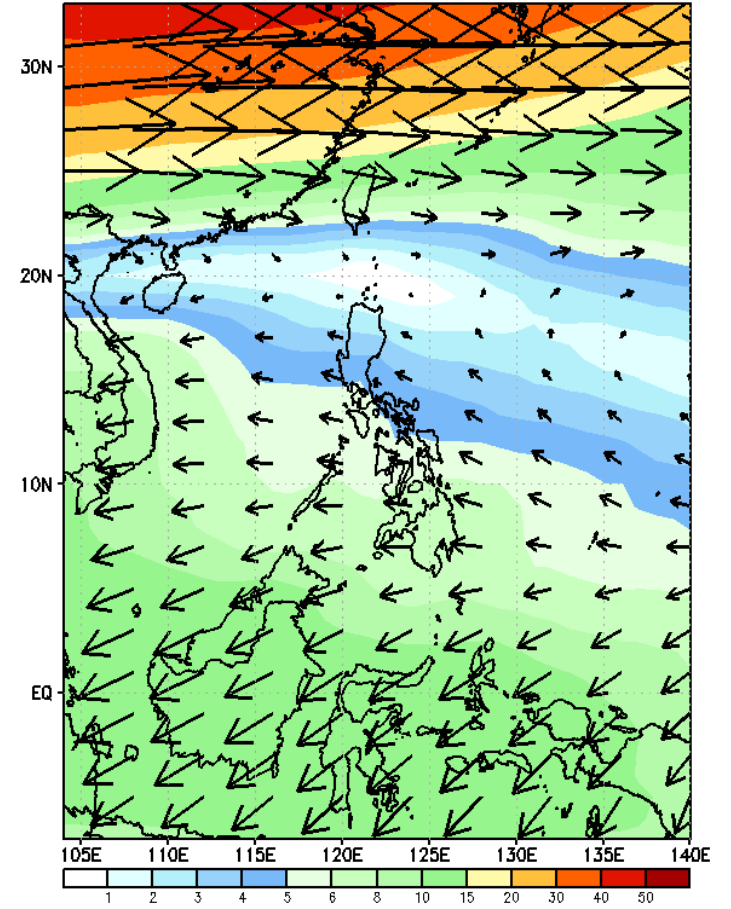
GEFS Week-2 850-hPa Wind Total
Valid: 20241018 - 20241024



GEFS Week-2 700-hPa Wind Total
Valid: 20241018 - 20241024

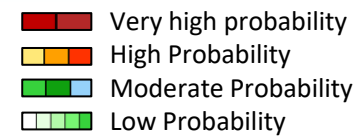


GEFS Week-2 200-hPa Wind Total
Valid: 20241018 - 20241024



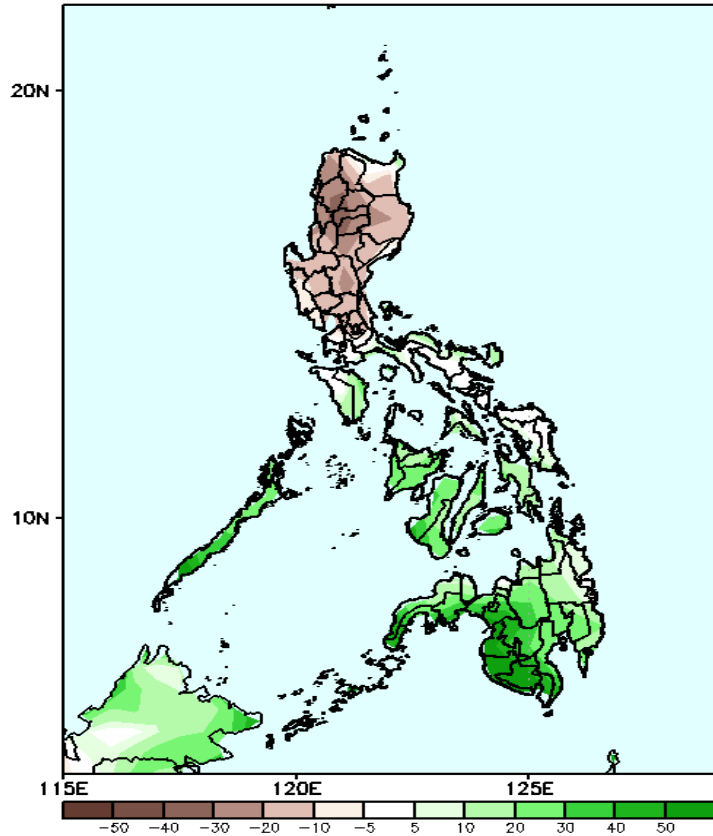
Easterlies affecting most parts of the country.

Precipitation Anomaly and Exceedance Probability > 25/50 mm

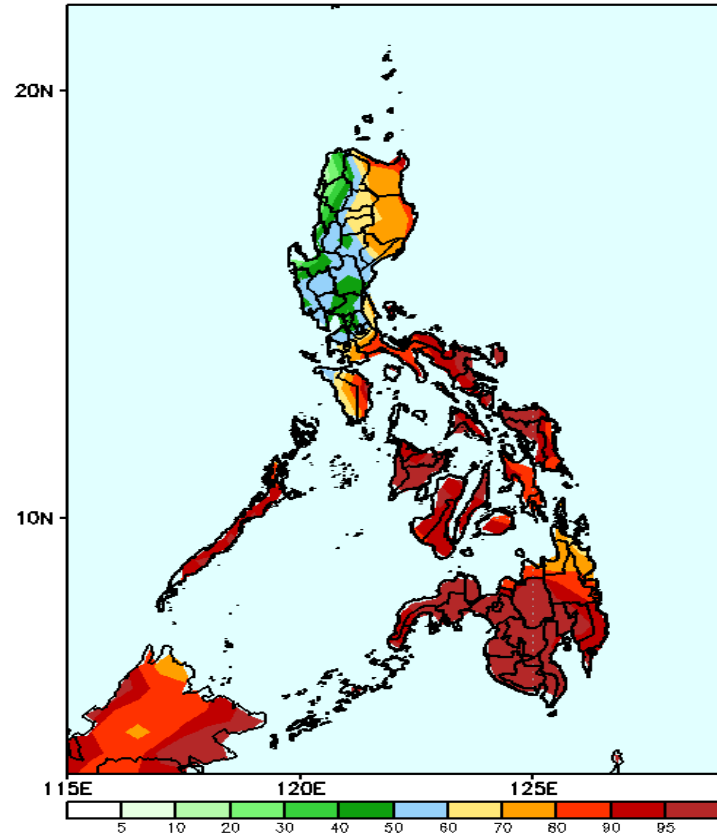


Week 2: Oct 18-24, 2024

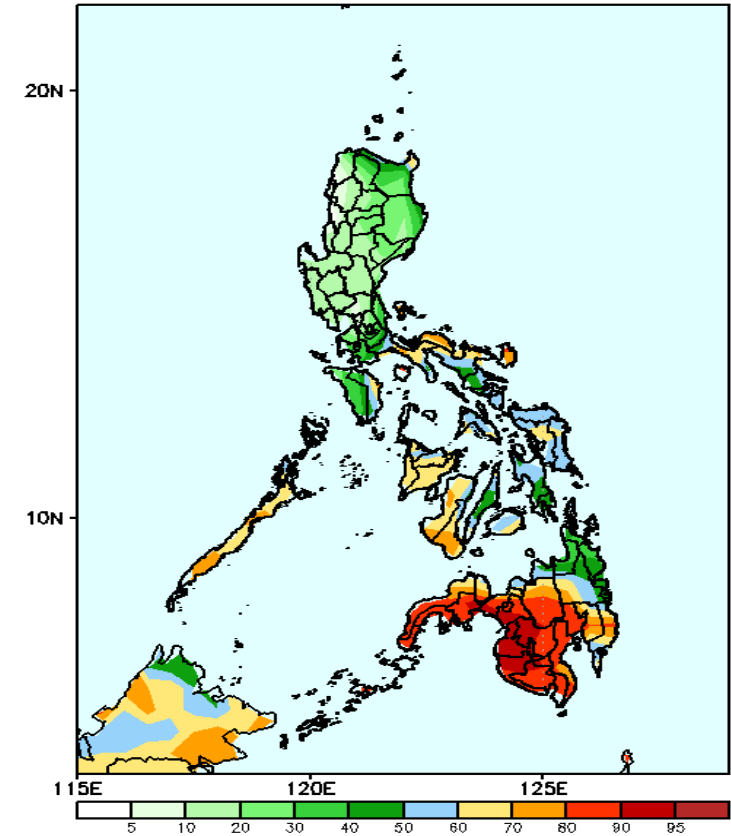
GEFS Week-2 Precip Anomaly
Valid: 20241018 - 20241024



GEFS Week-2 Exceedance Prob. > 25mm
Valid: 20241018 - 20241024



GEFS Week-2 Exceedance Prob. > 50mm
Valid: 20241018 - 20241024



Rainfall deficit of 10-40mm is likely in most parts of Luzon and Visayas while an increase of 10-50mm rainfall is expected for the rest of the country

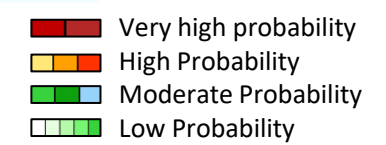
Probability to Exceed 25mm

- High to very high over most parts of Southern Luzon, Visayas and Mindanao.
- Moderate to high over the rest of the country.

Probability to Exceed 50mm

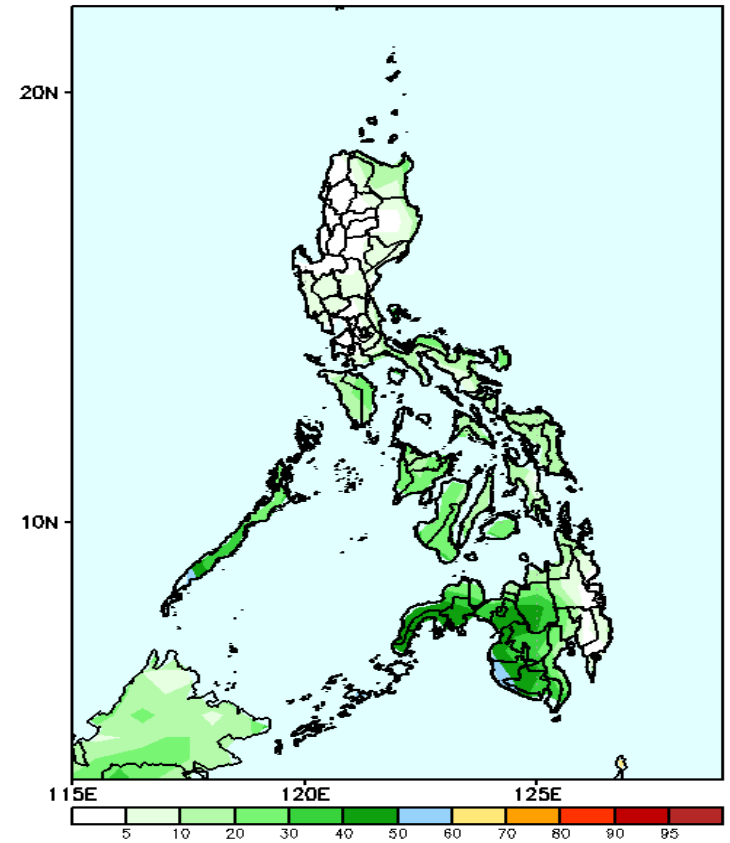
- High to very high over Western and Central Mindanao;
- Moderate to high over Quezon, Bicol Region, most of MIMAROPA, Visayas and Northern and Eastern Mindanao;
- Low to moderate over the rest of Luzon.

Exceedance Probability > 100/150/200 mm



Week 2: Oct 18-24, 2024

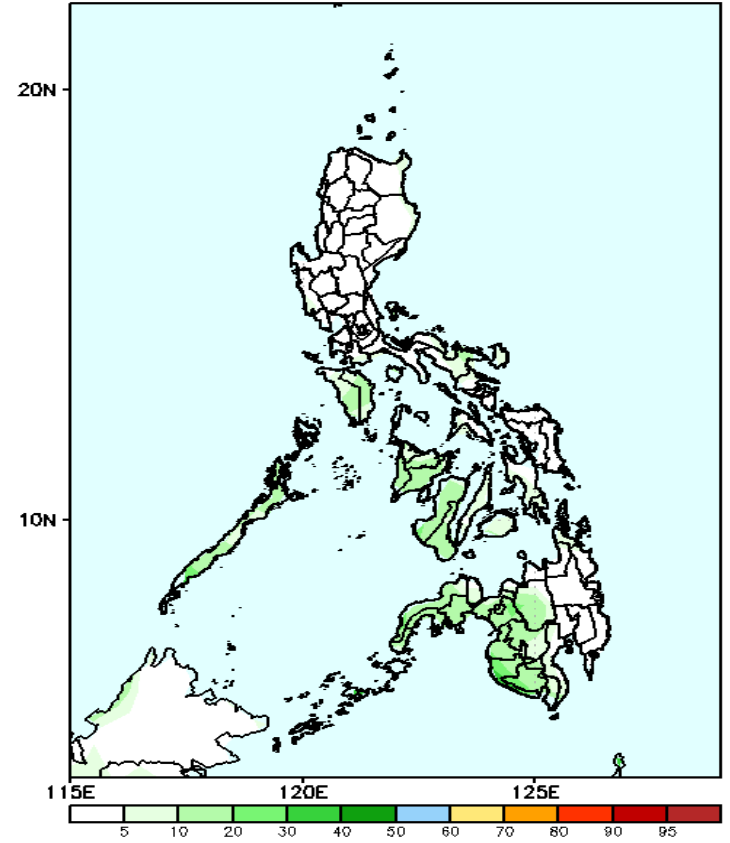
GEFS Week-2 Exceedance Prob. > 100mm
Valid: 20241018 - 20241024



Probability to Exceed 100mm

- Low to Moderate over Western Mindanao;
- Low over the rest of the country.

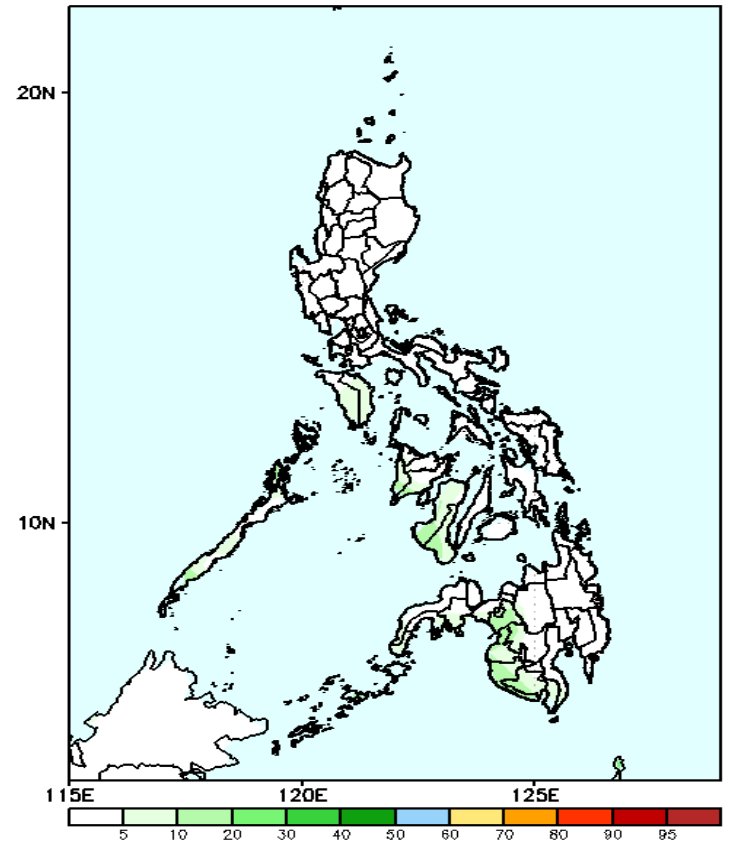
GEFS Week-2 Exceedance Prob. > 150mm
Valid: 20241018 - 20241024



Probability to Exceed 150mm

- Low across the country.

GEFS Week-2 Exceedance Prob. > 200mm
Valid: 20241018 - 20241024

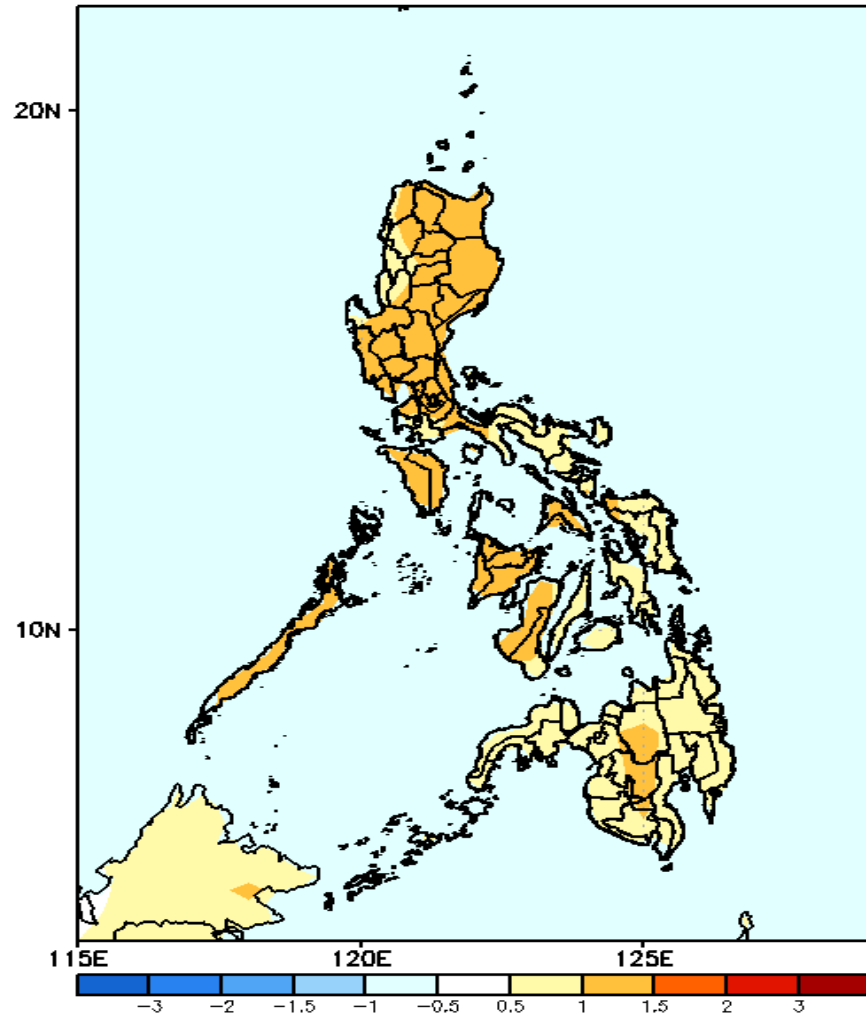


Probability to Exceed 200mm

- Low across the country.

GEFS Week-1 & 2 Forecasts: T2m Anomaly

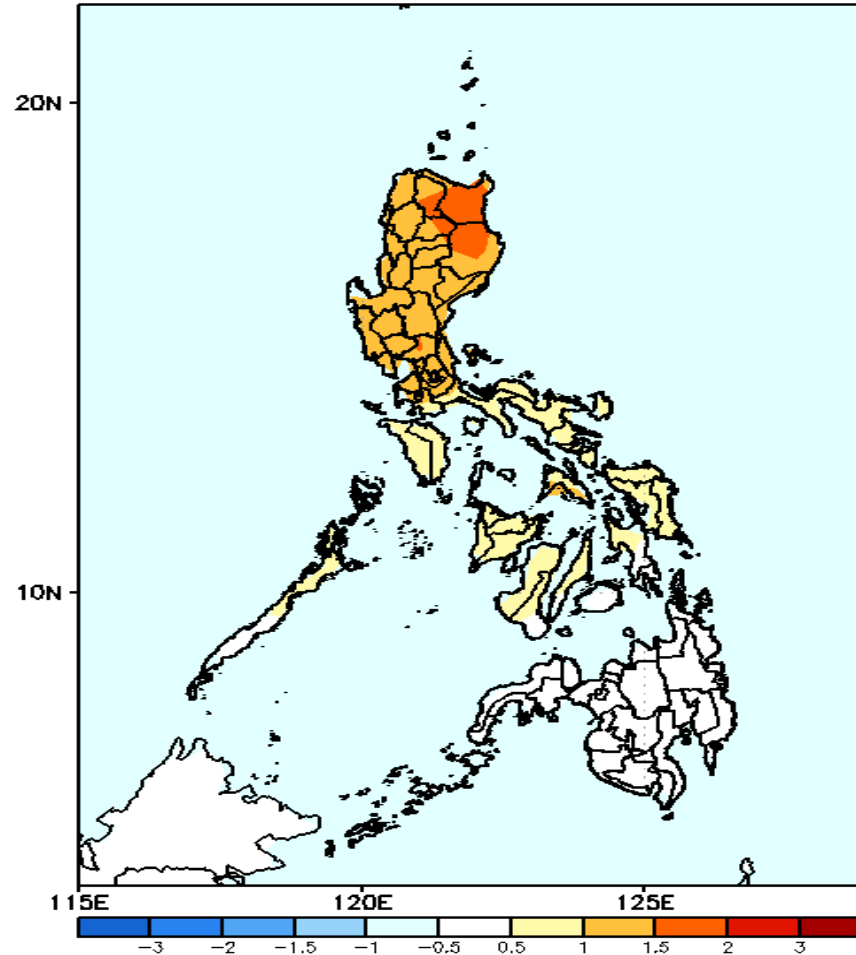
GEFS Week-1 T2m Anomaly
Valid: 20241011 - 20241017



2m Temperature Week 1: Oct 11-17, 2024

Slightly warmer to warmer than average surface air temperature will likely be experienced in most parts of the country.

GEFS Week-2 T2m Anomaly
Valid: 20241018 - 20241024



2m Temperature Week 2: Oct 18-24, 2024

Slightly warmer to warmer than average surface air temperature will likely be experienced in most parts of Luzon and Visayas while near average surface air temperature is expected in Mindanao.

